

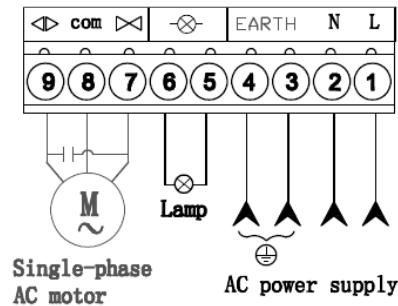
I Safety Instruction

1. For security, please read instructions carefully before initial operation; making sure that the power is off before connection.
2. Please clear the memory before initial operation. (Ref.: Erasing ALL learned/memorized Transmitters)
3. Do not learn the remote control when motor is operating in order to avoid mis-operation.
4. The received signal may be interfered by other communication devices. (e.g. the wireless control system with the same frequency range)
5. It is forbidden to control the high-risk coefficient equipment / system. (e.g. cranes)
6. It is used only for the manual remote control and wireless control equipment / system which must not endanger life or property during running failure, or its security risks have been eliminated.
7. It should be applied in dry indoor place or in the electric appliance place.

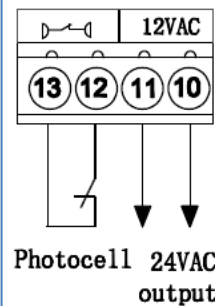
II Technical Index

1. Working voltage: 220VAC/110VAC, 50Hz/60HZ
2. Temperature range: -20°C to 60°C
3. Loading capacity: 1HP, 250VAC
4. Built-in fuse: 10A, please exchange appropriate fuse according to loading capacity
5. Operation time: adjustable from 10S to 130S
6. Working frequency: 433.92MHz
7. Transmitters stored: 30PCS
8. Size : 150*77*38
9. Weight: 318g

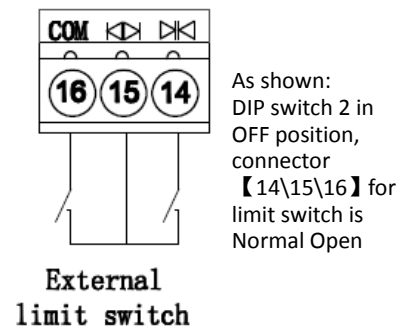
III Wire connection



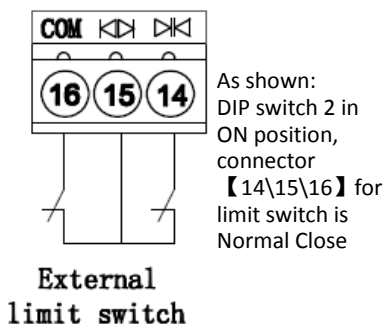
As shown:
 A: 【1\2\3\4】 For working voltage 220VAC\110VAC;
 B: 【5\6】 Connector for flash lamp
 C: 【8】 Connector for motor common port 1; 【7】 Connector for motor running port 1; 【9】 Connector for motor running port 2.
 D: 【7\9】Connector for motor starting capacitance.



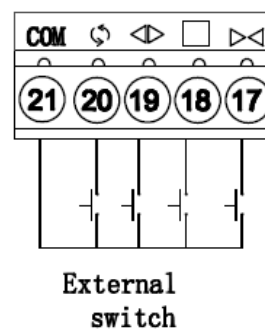
As shown:
 A: 【12\13】 Connector for photocell protection switch NC contact
 B: 【10\11】24VAC output can power supply the photocell.
 C: If no need of using photocell, make connector 【12\13】 short circuit with terminated line(the connector is short circuit when leave factory)



As shown:
 DIP switch 2 in OFF position, connector 【14\15\16】 for limit switch is Normal Open



As shown:
 DIP switch 2 in ON position, connector 【14\15\16】 for limit switch is Normal Close



As shown:
 Connector 【17\18\19\20\21】 for external close/stop/open/loop control, control systems is the same as using transmitter.

IV Set up

- 4.1 Learning transmitters: Press the learning button, LED is on, enters into the learning / memorizing transmitter process; Press the same button twice, LED blinks for several times, then off. The learning process is successful. (Ignore this step if transmitter already matches the opener before delivery):
- 4.2 Erasing transmitter: Press the learning button, continue pressing for 8s until LED turns off; Release learning button, LED will be on (about 1s) and then off; the erasing process is successful. (Ignore this step if transmitter already matches the opener before delivery)
- 4.3 Opening/closing limit adjustment: Remote control the door (or move the door manually), adjust the position of limit device to make sure the door would touch the limit switch when open or close the door .LED LD5/DL6 in the controller will be off when limit device touches limit switch
- 4.4 Running time/waiting time adjustment: « Adjust potentiometer T. Normal to change the running time (10-130s) of motor .Adjust it to make the running time slightly longer (1-2s) than opening time that it needs. Adjust potentiometer T. Wait to change the time that between door opening to auto-closing(10-130s).This function is available when DIP 1 is at ON position .
- 4.5 Photocell protection function test: Photocell connector connects the NC contact of photocell switch , DL7 LED turn on after the connection, And DL7 LED turn off when blocking out the transmit or receive signal of photocell artificially
- 4.6 DIP Switch set

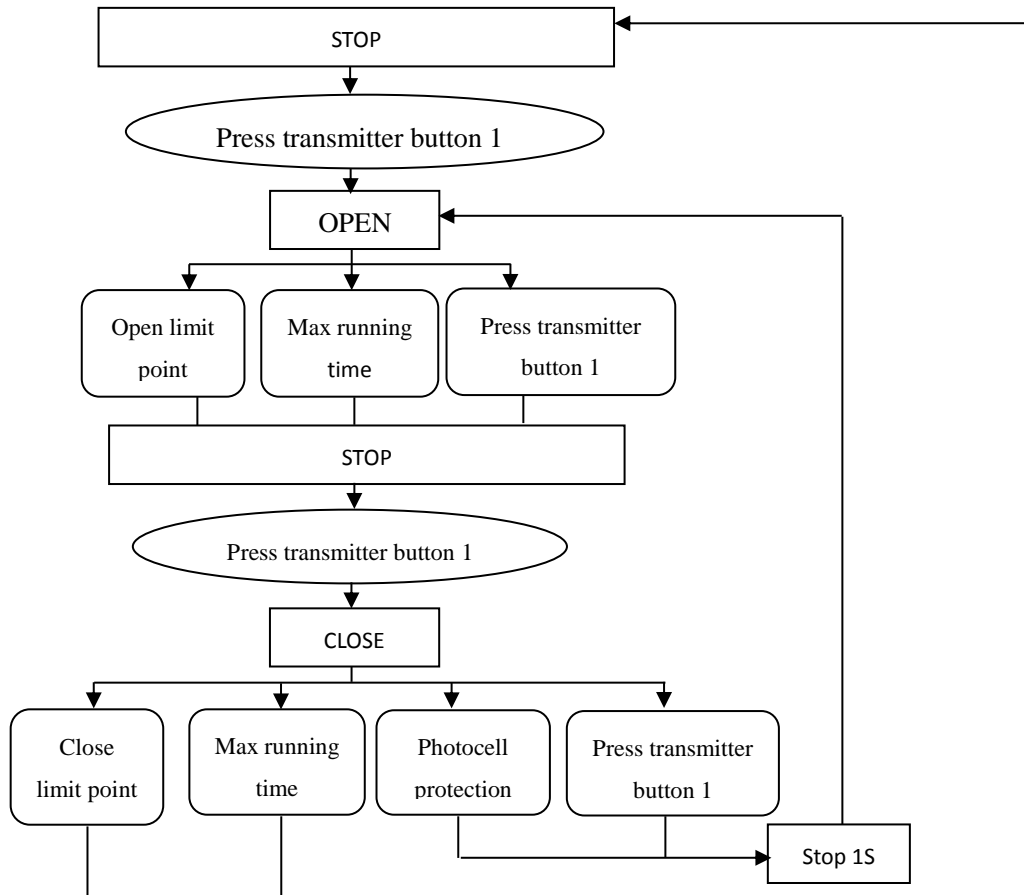
DIP1:
 ON: Auto-close is effective
 OF: Auto-close is off

DIP2:
 ON: External limit NC switch
 OFF: External limit NO switch

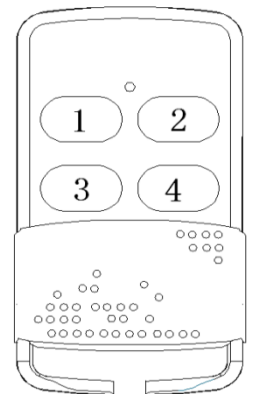
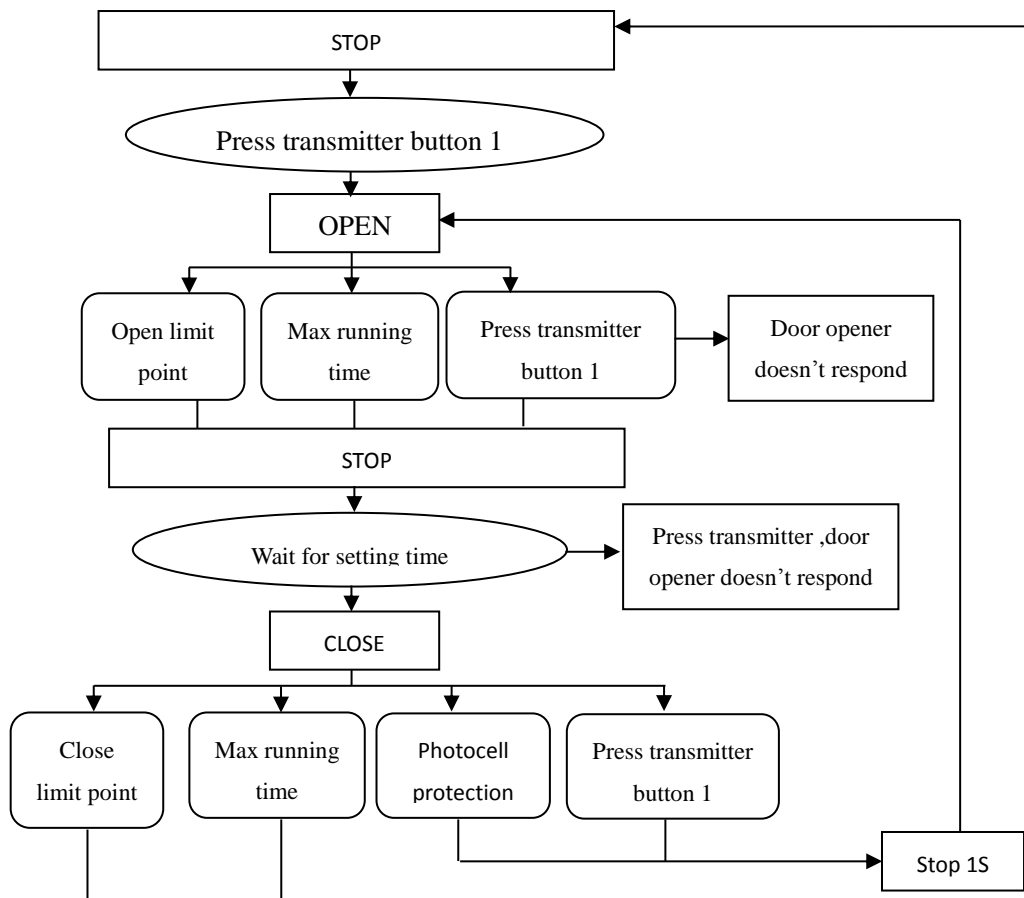
DIP3:
 ON or OFF can change the current operating direction of motor (opener can be chosen to install on right side or left side of the door)

DIP4:
 No

6.1 Do not start auto close function (DIP 1 at OFF position)



5.2 Start auto close function (DIP 1 at ON position)



Description :
 Single button control ,
 press-open-press-stop-pr
 ess-stop; Only the learned
 button is effective in the
 transmitter, original
 button is not effective any
 more when a new button
 has been learned in the
 same transmitter (For
 example, button 1 was
 learned firstly, button 2 or
 3 has been learned of the
 same transmitter
 afterwards , then button 1
 was not effective any
 more)